

How to use the interactive map

- * [general navigation tips](#)
- * [navigating by mouse](#)
- * [navigating by selection](#)
- * [regional level screen](#)
- * [key facts screen](#)
- * [ward comparisons](#)
- * [bar chart comparison](#)

[FAQS](#)

[I can't see anything, there is no map visible in my browser](#)

[Making images from the map](#)

[The map has crashed, or is behaving in an unexpected manner](#)

General navigation tips:

Don't use the back button of your browser, always use the 'RESET' or 'BACK TO MAP' keys.

If you encounter problems then you can use the 'REFRESH' button of you browser to return the map to its initial state:



REFRESH buttons in Internet Explorer and Mozilla

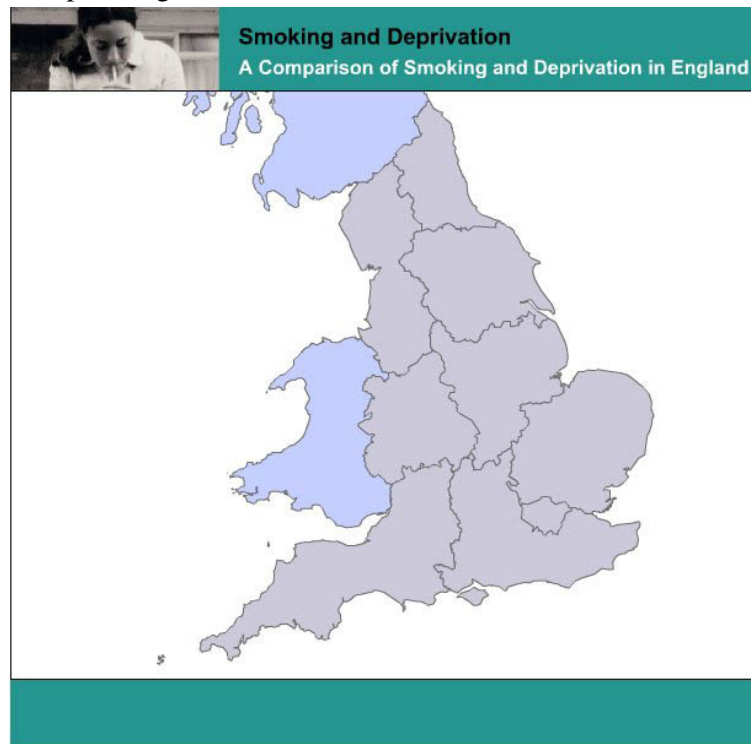
Navigating by mouse

The primary purpose of this map is to show a comparison of smoking prevalence and deprivation in England. Here is how to find the statistics for your region, district and ward: On loading up you will see a screen that should look like this:



The screen is divided into two main sections:

The larger, left hand side, is where the data is displayed. To begin with you should be presented with a map of England at National Level. see below



When it first loads up the map will display a message that reads: "Click on the map to navigate to wards".

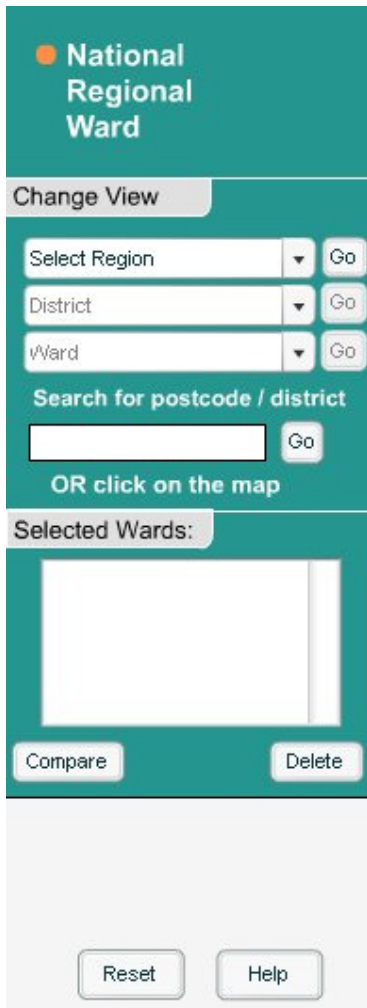
Click on the OK button to begin.

The map is now live, and you can use this map to navigate to areas of England you are

interested in. Just click on a region with your cursor and the map will zoom in to the selected area at a [Regional level](#)

Navigating by selection

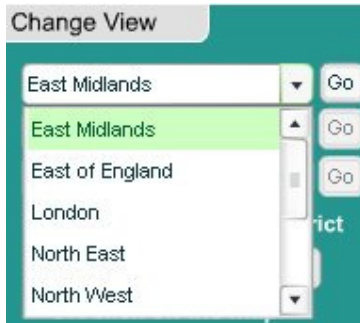
The right hand side of the screen has a navigation panel:



The navigation panel is a vertical sidebar with a teal header. The header contains an orange circle icon and the text "National Regional Ward". Below the header is a "Change View" section with three dropdown menus labeled "Select Region", "District", and "Ward", each with a "Go" button to its right. Below these is a search field labeled "Search for postcode / district" with a "Go" button. Below the search field is the text "OR click on the map". Below this is a "Selected Wards:" section with a large empty white box. At the bottom of this section are "Compare" and "Delete" buttons. At the very bottom of the panel are "Reset" and "Help" buttons.

You can use this to navigate to areas of England in which you are interested in the following ways:

- a) Select a region from the drop down menu



OR

b) Type in a postcode (eg. EC2A 4HW) or a place name (eg. Lambeth or Manchester) into the search box.

NOTE: when typing in a postcode, you must write it in the following format. e.g. EC2A 4HW with a space dividing the two sets of digits.

The first part of the Postcode eg PO1 is called the outward code as it identifies the town or district.

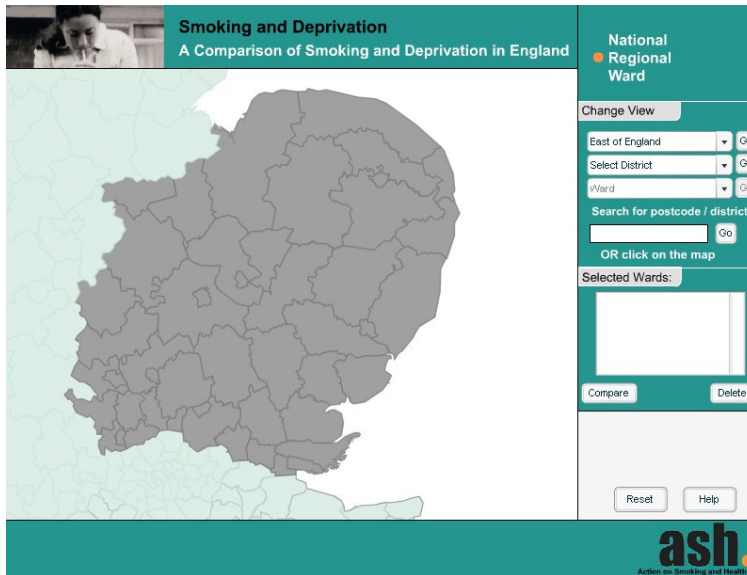
The second part of the postcode eg 1EB is called the inward code. This identifies the particular sector in the town or district.

Sometimes the postcode search will ask you to clarify which district you wish to view presenting a selection of the districts covered by the postcode in the the main (left hand side) screen. Simply click on the relevant one from the list.

When you select a region the map will zoom in to it.

You will then be viewing at Regional Level (note the orange dot next to regional in the top right hand corner of the screen)

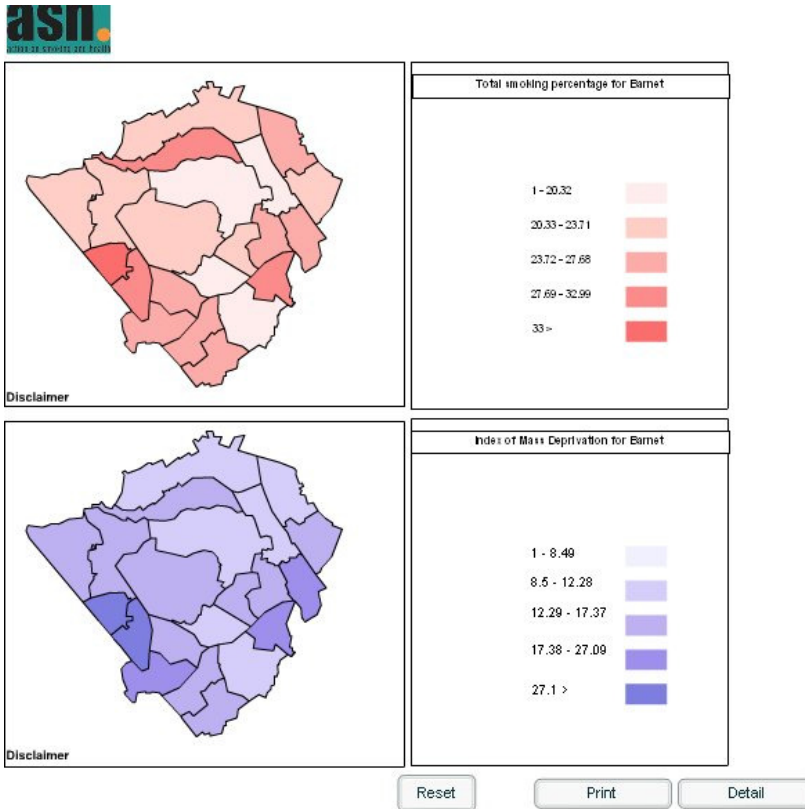
Regional Level



At the regional level, you can zoom in further using the same methods as described above,

- a) clicking on the map to select a district
- b) selecting a district from the drop down menu
- c) typing in the name of a district.

When you have selected a district the application will go to a new screen which will display, by default, two maps depicting a comparison of Smoking Prevalence and IMD scores for the selected district. The screen should look like this:



There are three buttons below the maps:

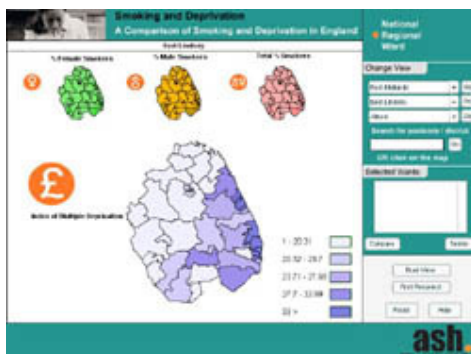
PRINT, which will allow you to print a copy of the map via your printer or to PDF

RESET, which will return you to [stage one of the application](#)

KEY FACTS, which will enable you to explore the statistics and map in greater complexity. This function is explained below:

Key facts

Clicking on the KEY FACTS button on the comparison page will lead to a new page:



Here you will be presented with 4 maps:

Green = Number of female smokers

Orange = Number of male smokers

Red = Total percentage of smokers (both male and female)

Blue = Index of Multiple Deprivation (IMD)

Clicking on the orange icon beside each of these maps will bring that map into the foreground of the screen.

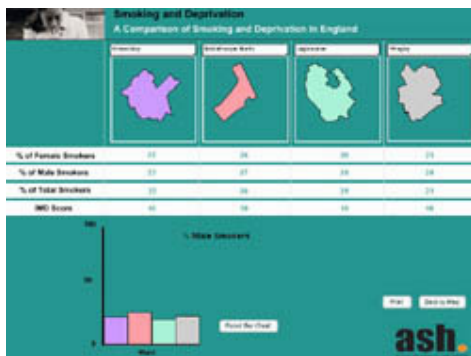
Hovering your cursor over the wards on the map will bring up the details for each ward in an info box.

Ward comparisons

Clicking on the wards of the map will select them and they will then appear in the 'Selected wards' box to the right of the screen. You can select wards from all over the country by using the drop down navigation system or the search box to find the wards you are interested in and then use your mouse to click on them and select them from the main display screen. Anytime that the ward is displayed on screen you can click on it and it will be stored in the SELECTED WARDS box. Selected wards can be removed by selecting them in the selected wards box and clicking on the DELETE button.

When you have collected the wards you want you can then press COMPARE and go to a screen which will enable you to perform a comparison.

Bar chart comparison



The comparison screen shows up to 4 selected wards at once. They appear in boxes at the top

of the screen as coloured shapes. Beneath these pictures are the data, shown in rows. When you move the cursor over a row it will be highlighted orange. Clicking on the row will bring a bar chart up at the bottom of the screen comparing the selected data set. You can then print out the screen using the PRIN button.

There are four grey buttons at the bottom left of the KEY FACTS screen



these enable the following processes:

Print preselect

NOTE: The PRINT PRESELECT button on the DETAIL screen enables you to select other comparisons between the four maps and then view them as a DUAL VIEW and then PRINT them.

When you click on PRINT PRESELECT in the DETAIL screen:

A grey box titled 'select two views' will come up with the following four options:

IMD

Total Percentage

Female Percentage

Male Percentage

By default IMD and Total Percentage are selected (a tick is by them in this box) but you can untick either or both and select others. The dual view will then be a comparison of these selected datasets

The DUAL VIEW button will take you to the [comparison screen](#)

The RESET button will return you to the [initial National Level Screen](#)

FAQ

! I can't see anything, there is no map visible in my browser. What can I do?

You need to make sure you have the latest version of the flash plugin installed in your browser, you can download it for free from [here](#). You may have to restart your computer after installing it.

! I want to save the map as a picturefile on my computer, what can I do?

The maps are not static images, they are representations of data generated in your browser - this is done to keep file sizes down and to make sure it works smoothly and quickly, however there are several options for making an image file from the map:

a) option A, you can download free image capture software from the Internet. One such program can be downloaded [here](#), another [here](#). These will enable you to make images out of anything displayed on your computer screen.

b) If you have Adobe Acrobat installed on your computer, you can print the map from your browser through Adobe Distiller, as a PDF

! The map has crashed, or is behaving in an unexpected manner

If you encounter problems then you can use the 'REFRESH' button of you browser to return the map to its initial state:



REFRESH buttons in Internet Explorer and Mozilla